

THE 92nd NATIONAL HONEY SHOW



1923



2023

Centenary Show Competitive Classes

Thursday 26th - Saturday 28th
October 2023

Flower
Display



Shop
Window
Display



Centenary
Artwork



Decorative
Honeycomb



Observation
Hive

*Sandown Park Racecourse,
Esher, Surrey, KT10 9RT, UK
For more information visit our website
www.honeyshow.co.uk*



A very warm welcome to the Centenary of the National Honey Show. It's going to be a really special event. We have come a long way since our first show at Crystal Palace in 1923 and we should take a moment to think about the many amazing and dedicated people who have delivered great shows over the years. Too many to mention here but you can read about them in our publication, 'A Short History of the National Honey Show', available to download from our website.

We have reflected the centenary in some of our existing classes but we've also added special centenary classes which replicate some you would have found in the early years. There are pictures in the schedule to inspire you!

A couple to watch are the show window display (great prize money on offer) and the amazing 'decorative honeycomb'. Have a look at the pictures – it's astonishing what our predecessors achieved. Stunning miniature versions of shop windows and bees persuaded to produce incredible shapes in wax comb. Can we match them? These would be great classes for Beekeeping associations to have a go at as a group.

Our overseas visitors requested a class for honey with nuts. This is a popular decorative product in the Middle East and of course we are delighted to oblige.

In the 1920's there was a class for observation hives. Back then the show was at a different time of year so, whilst we have reintroduced it, we are only looking for annotated photographs of frames so your bees can remain tucked up in their hives.

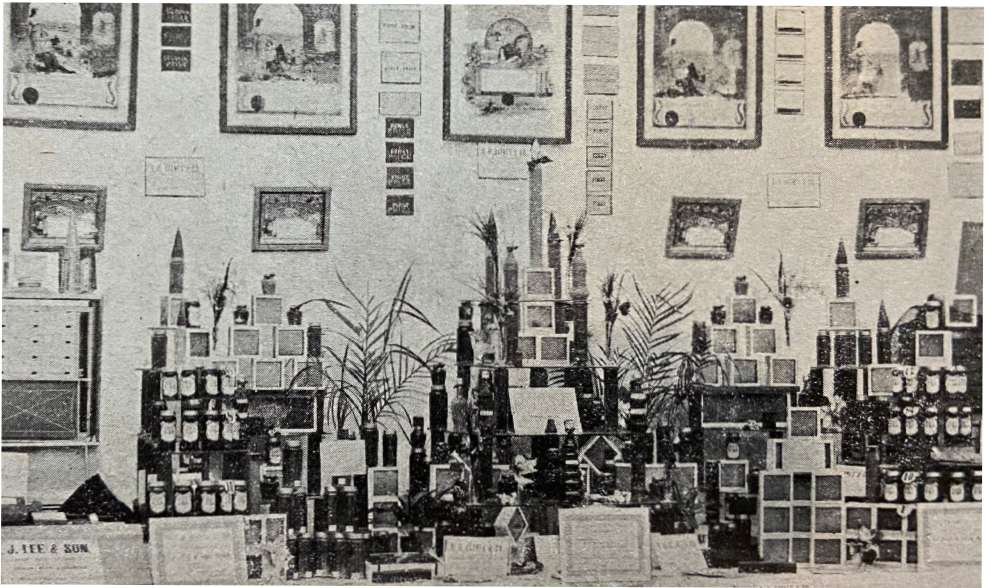
We have a great speaker line up and do look out for our exhibition of bee photography from French photographer Eric Tourneret, both inside and outside the building. This is a 'one off' and not to be missed. These pictures are not only stunning, they are enormous!

As always, we are grateful for the fantastic support we receive from our traders and the sponsorship we receive from the Worshipful Company of Wax Chandlers, beekeeping associations and individuals. We couldn't run the show without the support you give us. Thank you so much and please keep the support and sponsorship coming – especially this year as we are adding all sorts of 'extras' to enhance your enjoyment – they all cost money!

You will notice that we have split the Schedule of Classes and the Programme of Events for the Beekeepers Autumn Convention, Workshops and Trade Show into two booklets this year. We wanted to give everyone the opportunity to have time to prepare for the Show, particularly for the centenary classes.

As every show insider knows to say, 'see you at the National!'

Bob Maurer
Chairman



Example of a traditional Shop Window Display (see Class 83). (Photo from Producing, preparing, exhibiting and judging bee produce. by W. Herod-Hempsall 2nd edition 1948. Published by The British Bee Journal)

Stewards for the Show and Judges' Stewards

A huge thank you to everyone who helped in 2022, you all contributed to the success of the show.

Stewards for the show should apply to the Chief Steward, Bill Fisher, email steward@honeyshow.co.uk as soon as possible, but by **8th October** at the latest.

Stewards are required from 07:00 Wednesday 25th October until 20:00 on Saturday 28th October, please give up some time to help if you can.

Judges Stewards are required on Thursday 26th October from 9:00-14:00. You should apply to the Judges' Referee, Enid Brown, email judgesreferee@honeyshow.co.uk as soon as possible, but by **8th October** at the latest.

Preference will be given to those applicants who have started the process to becoming a honey judge.

Thanks to Meriet Duncan, Steven Turner, and Sue Carter for use of the photographs used in this booklet.

SHOW JUDGES FOR 2023

Judges' Referee: Enid Brown
Asst Judges' Referee: Hazel Blackburn

Email: judgesreferee@honeyshow.co.uk
Email: hazelputwain@gmail.com

Honey; Beeswax; Baking; Displays; Junior; Mead

Terry Ashley
Michael Badger
Paul Boyle
Sue Carter
Fiona Dickson
John Donoghue
Mike Duffin
Bill Fisher
John Goodwin
Steve Guest
Tony Jefferson
Christine Matthews
Peter Matthews
Jack Mummery
Suzy Perkins
Pierre Sanders
Bron Wright
David Wright

Candles

John Chandler
Joyce Nisbet
Debbie Smith

Inventions

Paul Smith

Commercial Wax

Dr. S Case-Green

Beer

Tim Hampson
John Porter

Honey Labels

Margaret Murdin

Photography

John Bunting (Convenor)
Michael Blackburn
Gary Francis

Microscopy

Jill Tinsey (Convenor)
Bob Maurer

Essay

Jill Tinsey (Convenor)
Pam Hunter
Gareth Morgan

Newsletter & Limerick

Jill Tinsey (Convenor)
Margaret Thomas

Video

Jill Tinsey (Convenor)
Sean Stephenson

CHALLENGE CUPS AND TROPHIES

All cups & trophies are Perpetual unless marked §

Cups and trophies may not be taken outside the UK and Eire

Awards given to 1st prize only, unless otherwise stated.

Title and Donor	Year Presented	Winner at the Show 2022	Class
Hamlin Cup Mrs BW Hamlin	1959	Not Awarded	1
Hender Cup Mr & Mrs AJ Read	1973	Jennifer Morgan	3
Apis Club Commemoration Cup L Illingworth	1952	Sue Carter	4
Medal of Ukraine Brotherhood of Ukrainian Beekeepers	2009	Mariam Al Mutawaa	10
Crystal Palace Cup Crystal Palace Trustees	1923	John Roberts	15
The Ross Rose Bowl Mrs MC Ross	1963	Joyce Nisbet	16
Badgerdell Cup Badgerdell Apiaries	1950	Deborah Smith	17
Plender Cup § Lord Plender	1933	Pauline Tidmas	Trophy Note 1 25
EH Thorne Trophy LL Thorne	1970	Ian Anderson	26
Chomhnascadh Cumann Beachairí na h-Eireann Trophy FIBKA	2010	Ted Gradosielski	27
The John Sturdy Cup Mr HA Sturdy, Master of the Worshipful Company of the Wax Chandlers	1984	Ian Anderson	29
E Graham Burt Cup § A Dodd	1930	Shirley Bond	Trophy Note 1 35
Burnett Cup Sir David Burnett, Bt.	1927	Shirley Bond	36
The McCormick Cup Mr E McCormick	1998	Mervyn Rothwell	37
Combings Cup Harry Allen Family and BBJ	1973	John Roberts	41
The Wax Bowl Mr & Mrs E Padmore	1963	Bill Fisher	45
The Candlestick Trophy Miss DV Burch	1972	Ian Anderson	49
The Liz and Mike Duffin Cup Liz and Mike Duffin	2018	Sue Rawlings	55
Mead Makers' Mazer Mead Makers' Ltd	1949	Chris Rawlings	60
Millennium Mead Coaster § Mr & Mrs PD Lishman	2000	John Watts	Trophy Note 2 61

The Harry Riches Memorial Trophy The Riches Family	2014	Andrew Gibb		62
Millennium Metheglin Coaster § Mr & Mrs PD Lishman	2000	Deborah Smith	Trophy Note 2	63
Jill Foster Memorial Trophy Sarah Foster	2011	Josephine Anderson		80
National Cup § NHS Limited previously won outright, re-presented by Mrs A Nicholson	1947 1967	John Summerville	Trophy Note 1	81
Moorcroft Bowl Re-presented by HG Hilder	1950	Warwick Newson		86
The HJ Wadey Trophy Mrs Jenny Wadey	1991	Filippo Negri		89
Dewey Cake Cup § Mrs Dewey	1936	Nick Grey	Trophy Note 1	127
The Silver Goblet Mr M Badger MBE	2017	Bill Fisher		138
School Apiary Shield EH Taylor Ltd.	1956	Saturday Junior Bee Club		142
McKenna Cup Guilford Div SBKA	1962	Archie Cridland		143
Tollington Shield JC Older	1967	Not Awarded		144
BBKA Schools' Cup British Beekeepers' Association	1959	Not Awarded		145
Rolt Trophy Mr & Mrs AC Rolt	1975	Not Awarded		146
The Jack Holt Trophy Mrs J Naylor	2012	John Roberts		151
Chairman's Trophy FJ Crow	1983	John Roberts		160
T Bradford Cup T Bradford	1963	Sue Carter		164
Millennium Punch Bowl Mr P Springall	2000	John Watts		167
The Ison Quaich Miss B Ison	1998	Christina Bradley		168
Leslie Thorne Trophy EH Thorne (Beehives) Ltd	2010	Elusive Brewing	Trophy Note 3	
The Francis Capener Trophy The National Honey Show Presented to mark 26 years as Hon. Gen Secretary	2014	Deborah Smith	Trophy Note 4	
The Harry Grainger Trophy Mrs Kathleen Grainger	1990	Brahim Meraga	Trophy Note 5	
The Adrian Waring Trophy Northamptonshire BKA	2021	Rebecca Day	Trophy Note 6	

Mrs B W Hamlin Cup Mrs BW Hamlin Presented to mark the visit of H.R.H. The Princess Royal in 1962	1963	Jonathan Kernan	Trophy Note	7
Anderson Memorial Cup Mrs & Dr John Anderson	1947	Joyce Nisbet	Trophy Note	8
Two Georges Skep G Hawthorne & GW Knights	1993	Sue Carter	Trophy Note	9
Members Cup Revd & Mrs DL Bryce Replaced by WJ Foubister	1950 1988	John Roberts	Trophy Note	10
The Thistle Cup IG Rankin	1963	Ian Anderson	Trophy Note	11
Apis Club Cup (AZA) Apis Club	1923	Sue Carter	Trophy Note	12
The Windermere Cup Dr Susan Jones	1991	Chris Smailes	Trophy Note	13
Tyrone Crystal Bowl Tyrone Crystal Company	1992	John Summerville	Trophy Note	14

COUNTY AWARD

Smallholder County Challenge Shield The "Smallholder"	1948	Buckinghamshire BKA	Trophy Note	15
---	------	---------------------	-------------	----

JEAN BLAXLAND MEMORIAL AWARDS

Jean Blaxland Memorial Prize for Mead Mr R Blaxland	2006	John Watts	Best Mead in the Show	
Jean Blaxland Memorial Prize for Schools Class 142 Mr R Blaxland	2006	Saturday Bee Club/Monday Bee Club/ ACS International School	Trophy Note	16



KENT CUPS

Commemoration Cup	1922	Gary Luckhurst	Trophy Note	17
Coronation Cup Col HC Ralls	1953	Bob Smith		202
Smith Cup Mrs J Smith	1923	Susan Payne		206
The Kent Wax Cup JW Holt	1972	Not Awarded		207
Beeswax Cup	2009	Peter Bashford		208
Coronation Mead Mazer Messrs Boots Ltd. & WC Davis	1953	Rebecca Beveridge	Trophy Note	18
Bee Cup	1925	Susan Payne		213
Barnes Cup AE Barnes	1923	Peter Bashford	Trophy Note	19
Vincent Cup GJC Vincent Previously won outright, re-presented by RJ Fital	1931 1988	Peter Bashford	Trophy Note	20
The Frank Crow Trophy Mrs. JD Crow	1995	Rebecca Beveridge	Trophy Note	21

SURREY CUPS

Egerton Smythe Cup Miss MM Smythe	1967	Jonathan Kernan		225
Lawrence Cup FH Lawrence	1947	Trevor Keast		226
Hood Cup Sir J Hood Bt	1924	David Parker		228
Silver Jubilee Bowl Surrey BKA	1935	Trevor Keast	Trophy Note 22	230
Hosegood Cup Croydon Division, Surrey BKA	1957	Alex de Salis	Trophy Note	23
Coronation Cup Mr & Mrs JJ Jones	1953	Trevor Keast	Trophy Note	24
Douglas Cup Surrey BKA	1958	Wimbledon	Trophy Note	25
W J 1968 Cup Miss M Whyte Johnstone	1968	Trevor Keast	Trophy Note	26
Mather Cup Mrs Mather Previously won outright, Re-presented by Mrs Furness	1927 1976	Marion Cooper	Trophy Note	27

SUSSEX CUPS

Lady Denman Cup	1938	Lesley Francis	Trophy Note	28
Crawley Cup	1955	Rob Gore	Trophy Note	29
Mrs. Matthews Cup	1932	Rebecca Champion	Trophy Note	30
P J Cup PJ Elcock Esq	1959	Phil Edwards		251
Berry Cup CF Berry Esq	1936	Rob Gore		252

ESSEX CUPS

Dodd Cup Mr and Mrs JR Dodd	1963	Ted Gradosielski	Trophy Note	31
The Walter Gee Trophy Janet French	2019	Ted Gradosielski		265
Tremearne Cup Saffron Waldon Division	1971	Pat Allen		266

MIDDLESEX CUPS

Dr Gregg Cup	1938	Harrow	Trophy Note	32
Robert Lee Cup	1946	William Fitzmaurice	Trophy Note	33
Carter Cup	1986	William Fitzmaurice	Trophy Note	34
C H Knifton Cup	1952	Dale Gibson		288
Frazer Cup	1950	Thomas Bickerrdike		289
John Wilson Cup	1999	Dinesh Bharkhada	Trophy Note	35
Alec Day Cup	1999	Not Awarded	Trophy Note	36
The EJ Woodman Cup	1952	Caroline Geheran		294

BUCKS COUNTY CUPS

Lord Cadman Cup Lord Cadman	1947	Bill Fisher	Trophy Note	37
Lawrie Webb Shield Bucks County BKA	1995	Jennifer Morgan		301

THE FEDERATIONS COUNTY CUP

Federation Cup		Bedfordshire	Trophy Note	38
-----------------------	--	--------------	-------------	----

BERKSHIRE COUNTY CUPS

The Berkshire Shield	2022	Jim Cooper		361
-----------------------------	------	------------	--	-----

Notes relating to award of Challenge Cups and Trophies for 2023

1. Five wins in successive years to win outright
2. Three wins in successive years to win outright
3. Best entry in Honey beer Classes 76 and 77 (Leslie Thorne Trophy)
4. Best 1st prize entry in Soft Set Honey Classes 30 and 155 (The Francis Capener Trophy)
5. Best 1st prize frame, any size, from classes 39 and 159 (The Harry Grainger Trophy)
6. Most points in Photographic Classes Classes 95-98 (The Adrian Waring Trophy)
7. Best 1st prize entry in Gift Classes 110-115 (Mrs BW Hamlin Cup)
8. Best 1st Prize Entry in Classes 118-119 (Anderson Memorial Trophy)
9. Most points gained in the Gift Classes 110-138 (Two Georges Skep)
10. Most points in NHS Members' Classes 151-168 (Members Cup)
11. Most points in NHS Members' Classes 151-168 gained by a Scottish Beekeeper with apiaries in Scotland (The Thistle Cup)
12. Most points in Classes 1-3, 17, 25-65, 110-138 (Apis Club Cup AZA)
13. Most points in Classes 29, 35, 40, 42, 113, 119, 156 and 158 for ling honey from apiaries in England (The Windermere Cup)
14. Most points gained by an Irish Beekeeper in Open & NHS members' Classes. (Tyrone Crystal Bowl)
15. County Association (Including Channel Islands) gaining most points in Classes 15-150 (Smallholder County Challenge Shield)
16. Distributed to Junior Classes as per judges recommendation (Jean Blaxland Memorial Prize)
17. Most points in Kent Classes 201-213 (Commemoration Cup)
18. Best entry in Kent Classes 209 and 210 (Coronation Mead Mazer)
19. Most points in Open and Kent Classes (Barnes Cup)
20. Most points in Kent Classes 201-204, 211-212 (Vincent Cup)
21. Most points gained by member of Kent BKA in NHS Members' and Kent Classes (The Frank Crowe Trophy)
22. Not to be held for more than 3 years (Silver Jubilee Cup)
23. Croydon member with most points in Surrey Classes 221-237 (Hosegood Cup)
24. Most Points in Surrey Classes 221-237 (Coronation Cup)
25. Most points in classes 221-237 between Wimbledon and Croydon Divisions (Douglas Cup)
26. Reigate member with most points in NHS Open Classes (WJ 1968 Cup)
27. Surrey member with most points in NHS Open Classes (Mather Cup)
28. Most points in Sussex classes 241-250 (Lady Denman Cup)
29. 2nd most points in Sussex classes 241-250 (Crawley Cup)
30. 3rd most points in Sussex classes 241-250 (Mrs Matthews Cup)
31. Most points in Essex classes 261-272 (Dodd Cup)
32. Association gaining most points in Middlesex classes 281-294 (Dr Gregg Cup)
33. Member gaining most points in Middlesex classes 281-294 (Robert Lee Cup)
34. Best honey in Middlesex classes 281-285 and 288 (Carter Cup)

Notes relating to award of Challenge Cups and Trophies for 2023

35. Most points gained by a male novice in Middlesex classes, (John Wilson Cup)
who has not previously won a Middlesex cup
36. Most points gained by a female novice in Middlesex (Alec Day Cup)
classes, who has not previously won a Middlesex cup
37. Most points in Bucks classes 301-318 (Lord Cadman Cup)
38. Awarded to the County with most points in classes 340-346 (Federation Cup)
39. Awarded to most points in Berkshire classes 361-364 (Berkshire Shield)



Example of a traditional shop window display (from the Great Yorkshire Show 2021 by Dr S. Fairweather). See Class 83

GENERAL DATA PROTECTION REGULATION (GDPR)

The Show holds contact and payment details of Members and Entrants to the competitive classes. This data is securely kept on computers as specified in the Data Protection Act 2018 (DPA 2018). Members and Entrants are entitled to see any data that is kept, or to request that it is removed from the records by applying to either the Members' or Entries' secretary. The data will only be used for the purposes of the Show and will not be sold on. No 'sensitive personal data' is kept. See Policies and Procedures on the website.

PRIZE MONEY ENDOWMENTS

<u>Class</u>	<u>Donor</u>	<u>Year Commenced</u>	<u>Notes</u>
<i>The Show acknowledges with appreciation the following 40 year Endowments.</i>			
	Dr SW Jones	1994	The Winderemere Cup costs, in memory of her father
15	Warwickshire BKA	1995	In memory of Jim Watson
31	Northants BKA	2001	
63	Hampshire BKA	2001	The Pulinger Prize
141	Rev. HF Capener	2001	
<i>The Show acknowledges with appreciation the following 20 year Endowments.</i>			
144	Bedfordshire BKA	2006	
38	Bournemouth and Dorset South BKA	2007	
60	Gloucestershire BKA	2007	in memory of Robin Hooper
91	Mrs C Wilkinson	2010	
36	Worcestershire BKA	2011	
131	CS Mence	2011	in memory of Mrs EM Mence
37	McCormick Cup costs	2011	in memory of Mr E McCormick
32	Surrey BKA	2012	
27	Michael Badger MBE	2013	in memory of Peter Springall, in appreciation of his many years as Show Supervisor
1	R Maurer	2017	
29	Devon BKA	2019	
33	Newhouse Apiary	2019	
101	Newhouse Apiary	2019	
95-98	Northants BKA	2021	Adrian Waring Trophy Costs
88	Reigate BKA	2023	In memory of Audrey Gill
<i>The Show acknowledges with appreciation the following Endowment.</i>			
16	Mrs J Beavington	2020	for 6 years

NATIONAL HONEY SHOW BLUE RIBBON AWARD

Starting with the Centenary year, the Blue Ribbon Award will confer Membership and all its benefits of the National Honey Show for that year. The Blue Ribbon is designed as the premier award at Honey Shows round the country. It is awarded to one entry that the judge feels is prepared to the highest standard within the show. **Please note that the Blue Ribbon may only be awarded by National Honey Show approved judges at shows that attract over 100 entries in all beekeeping classes.**

Approved judges will have a supply of Blue Ribbons, Certificates of Merit, Novice Awards and Junior Prizes, which they will present at appropriate shows. There is no need to apply for them ahead of time.

CERTIFICATE OF MERIT

This is awarded to a show where the entry numbers are less than 100, when a Blue Ribbon cannot be awarded. The Show will confer Membership and all its benefits of the National Honey Show for that year.

NOVICE PRIZE WINNERS GIFT ADMISSION TICKETS TO NHS

Offered to winners of Novice or Beginners classes at any Honey Show. The Show will confer Membership and all its benefits of the National Honey Show to the recipient for that year. The range of classes at a Honey Show eligible for the scheme is subject to the widest interpretation. At some shows the Novice Class is strictly for those who have never competed before, at others the classes are open to those who have never won a 1st prize before. At the discretion of the judge, more than one award can be made providing it is one for honey and one for wax (maximum 2 awards).

JUNIOR PRIZE WINNERS GIFT ADMISSION TICKETS TO NHS

School and Junior Classes (under 17) have no limitations in the number of awards, so long as the entry is for Beekeeping products and is at a Honey Show or in the Beekeeping Section of another kind of Show. The Show will confer Membership and all its benefits of the National Honey Show to the recipient for that year and admit one adult with the prize winner.

Note to Show Secretaries, the Judge will have the details required for you to submit to the General Secretary so the recipients of the awards can receive their NHS Membership.

LIFE MEMBERSHIP

Take out Life Membership NOW. Guard against future inflation.

For a once only payment of **£375**, you can become a member of the Show for your 'life'. A spouse or partner can similarly become a Life Associate Member for the life of the Full Member on making a single payment of **£120**. The associate membership ceases when the full membership finishes. The above sums are reduced for those over the age of 69 to **£180** and **£65**, respectively.

Contact the Hon. Membership Secretary, email: treasurer@honeyshow.co.uk

GUIDANCE FOR EXHIBITORS

ENTRY FEES

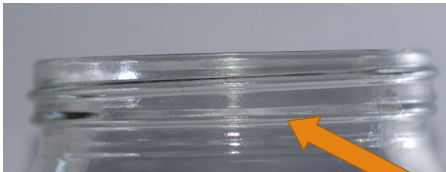
The appropriate entry fee is stated at the beginning of each section, but please note there are exemptions stated in appropriate classes. Wherever possible, these should be paid by BACS. Payments of less than £5 should be paid by BACS or by cash at the Show. Please use the reference ENTRY when paying by BACS. See the Entry Form for full instructions. **Overseas Exhibitors** may pay their subscriptions and entry fees in Sterling at the show to save on currency charges. Any prize money will be paid in Sterling. **It is regretted that any cups awarded may not leave the British Isles.**

STANDARDS

Judges expect the “National” high standard of exhibit and will make or withhold awards accordingly. The Judges’ referee will advise on any queries arising from the results.

WEIGHTS

1lb squat jars of both the screw and twist lid, 12oz and 8oz jars (for some classes) are accepted by the Show. The twist lids are not as deep as the screw ones and even when the jar is filled to the required volume, there can be an air gap between the top of the honey and the bottom of the lid. In order for the judges to know that the jar has the correct weight, all jars should be filled to at least the “fill line”.



Screw Jar



Twist Jar

Fill Line



A few exhibits are marked down by the judges because of incipient granulation. Exhibitors are advised to use a torch to examine their entries to ensure clarity of the exhibits.



Exhibitors are advised to use a check weight when preparing wax blocks.
New exhibitors are advised to consult any relevant NHS Publications (see page 12).

UNITS OF MEASUREMENT AND DIMENSIONS

Imperial measurements are to the nearest practical equivalent of Metric. Exhibitors will have the advantage where there are slight discrepancies between the two measurements.

DELIVERY AND STAGING OF EXHIBITS

When you arrive at the hall, collect your **Exhibits Entry Form** from the Entries Secretary in the lower foyer. Tables have been provided to enable you to unpack your exhibits and do any final “touching up”. However, it is not recommended that lids are changed to avoid exposing honey to the atmosphere of the hall. When you are ready to submit your exhibits, a steward will come to your table and log them in where they will be checked in against your “exhibits entry form” and passed to a staging steward. Except for specific classes indicated in the schedule, all exhibits are staged by stewards who will be wearing cotton gloves whilst handling them.

Any wooden or metal box in which exhibits are brought to the Show may be stored on the premises as directed by the stewards, but any cardboard boxes must be taken away.

PRIZES

Prize money, vouchers and prize cards will normally be available for collection from the cashier's desk from the second day of the show. Winners of cups and trophies are advised that these must be properly cared for whilst in their possession. They are not insured by the Show.

POINTS AWARDS

Points for the Smallholder Shield and other cups and trophies are calculated on the following basis: 1st, 6 points; 2nd, 5 points; 3rd, 4 points; 4th and VHC, 3 points; HC, 2 points; C, 1 point.

CHANGES TO SCHEDULE

► This symbol indicates a new class or a change from last year's schedule.

PUBLICATIONS

The National Honey Show Publications:

- No.1 A Short History of the National Honey Show
- No.2 Beeswax Candles for Show
- No.3 Comb Honey for Show
- No.4 Granulated or Crystallised Honey
- No.5 Judging Honey in the Jar
- No.6 Management, Production and Exhibiting of Heather Honey
- No.7 Preparation of Liquid Honey
- No.8 Producing Mead for Showing and Drinking
- No.9 Showing Honey Products
- No.10 The Study of Pollen (A Short History)
- No.11 Wax for Show

Booklets are available to purchase at the Show and major trade shows for £4.00 each or can be download from the “shop” on the NHS web site for £3.00. (www.honeyshow.co.uk)

RULES AND REGULATIONS

Staging: Wednesday 25th October 2023. Collection: Saturday pm 28th October 2023.

All products of the hive must be the bona fide produce of the exhibitor except where stated.

1	<p>► All entries must be made on the entry form provided or downloaded from the web site. www.honeyshow.co.uk</p> <p>Completed entry forms can be emailed to entries@honeyshow.co.uk, please pay by BACS, see entry form. Completed entry forms only for all classes (except 95 -109 inclusive and 315-316 and 318, i.e. essays, videos, microscopy slides and photographs-see below) must reach the Entries Secretary, Jill Tinsey; 1 Old School Cottages, Ettling Green, Dereham, Norfolk, NR20 3EU by the 9th October 2023. Late entries may be made until the 16th October, but will incur an additional late entry fee of £10.00.</p> <p>Completed entry forms for classes 95-109 inclusive and 315-316 and 318, i.e. essays, videos, microscope slides and photographs must reach the Entries Secretary by 11th September 2023. The actual entries for these classes need to be with the appropriate convenor as directed by the entries secretary by 25th September. No late entries will be permitted for these classes.</p>
2	<p>► Entry Fees: Class entry fee is £2 per class for non-members unless otherwise stated. Exemptions from fees are for members of the National Honey Show, entrants in classes 1-12, 32, 82-87, 93, 107, Junior classes and all Gift class entries. The fee for all County classes is £1 for each entry.</p>
3	<p>► Delivery, Staging and Collection of Exhibits:</p> <p>(a) Exhibits for classes 95-109 and 315-316 and 318 will be required for judging prior to the Show. These must be received by the convenor in accordance with instructions as received from the Entries Secretary.</p> <p>(b) Exhibits in classes 1, 16-17, 53-57, 80-81, 83, 90-93, 145-146, 314 must be delivered on Wednesday 25th October between 2:00pm and 8:00pm.</p> <p>Exhibits may be sent by courier/post to The National Honey Show c/o Tonicha Hopley, Honey Show, Sandown Park Racecourse, Portsmouth Rd, Esher, Surrey, KT10 9AJ. Not to arrive BEFORE Monday 23rd October 2023.</p> <p>(c) All other exhibits. except classes in 3(a) above - Exhibitors delivering exhibits personally must unpack them and submit them for staging between 2.00pm and 8.00pm on Wednesday 25th October 2023 or with permission from the Entries Secretary on Thursday 26th between 7.30am and 9.00am, provided you have indicated on the entry form your intention to do so. Cardboard containers must not be left on the premises as they are contrary to the fire regulations.</p> <p>(d) Staging of exhibits will be by the appointed stewards, except Classes 16-17, 53-56, 80-81, 83, 90-93, 145-146, which may be staged by the exhibitor on Wednesday, 25th October by arrangement with the Show Supervisors. All staging on Wednesday 25th October to be completed by 8.00 pm and the premises vacated.</p> <p>(e) Collection on Saturday at the close of the Show. <i>Exhibit Collection Forms</i> will need to be collected and will be available for collection after 1.00pm on Saturday 28th October. The Honey Competition will close at 3.00pm and exhibits can be collected after this. (The Trade Hall and Lecture Halls will remain open until 4.30pm). At the close of the Honey competition everyone will be asked to vacate that part of the hall.</p> <p>Gift Entries that have been bought back will be on the staging ready for collection as well as the jars that have been opened for judging.</p> <p>When you have collected and signed for your exhibits please leave the hall as quickly as possible.</p>

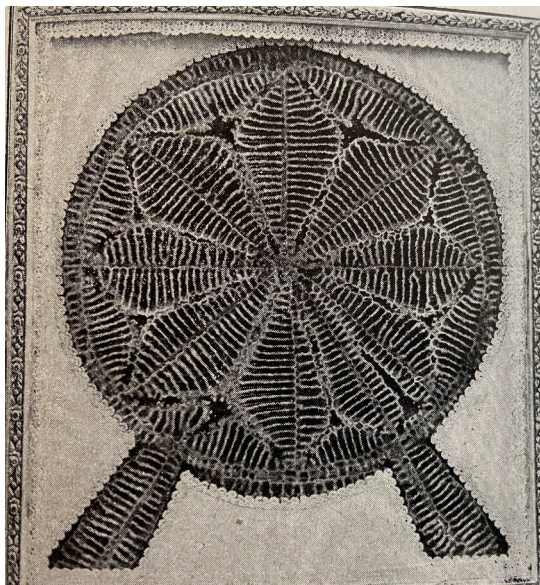
4	<p>Labels: Exhibitors must label every jar, section, or other exhibit with the labels as supplied by the Entries Secretary before delivery to the show. A minimum charge of £1 will be made for any duplicate labels. No labels will be available on Thursday morning.</p> <p>The labels, which must not be altered, shall be affixed on jars and bottles to allow between 10 and 15 mm between the edge of the label and the bottom of the vessel, or as near to this as possible All other labels shall be affixed according to rules 5-11.</p> <p>Except where otherwise specified no Exhibitor's card, trade mark, label, name or writing may be placed on or attached to any part of an exhibit.</p>
5	<p>► EXTRACTED HONEY: All honey must be the bona fide produce of the Exhibitor's bees and presented in food grade containers.</p> <p>a. Extracted Honey: must be exhibited in plain, clear 454g (1lb) squat jars (glass or plastic) with standard gold lacquered metal, or gold plastic, screw tops or twist-off lids and matching, except where otherwise stated. See guidance notes.</p> <p>b. Colour - BD Standard Grading Glasses will be used. (Grading glasses should be viewed against the side of a standard 454g (1lb) honey jar with a matt white background. Do not use grading glasses against a direct light source).</p> <p>c. Labels - Exhibitors must label every jar before delivery to the show as per rule 4. No other labels are permitted except for Classes 17, 34, 80-81 and 83.</p>
6	<p>► COMB HONEY: All honey must be the bona fide produce of the Exhibitor's bees</p> <p>a. Square sections approximately 454g (1lb) may be enclosed in cardboard commercial sale section cases or white show cases. Place labels at the right top corner of the vertical transparent face of the front of the case and the duplicate on the top of the section itself.</p> <p>b. Round sections must have clear covers on both sides. Place one label on rings and duplicate on face 12-15 mm from bottom edge of each section</p> <p>c. Cut comb honey must be shown in a container, sold as for cut comb, with a transparent lid and must have a gross weight between 200g-340g (7-12oz). Labels shall be affixed one on the lid and the duplicate on the long side of the container. If using comb containers where the lid is affixed to the case a single label on the lid is acceptable.</p> <p>d. Frames for extraction should be wired (except Class 307) and must be shown in plain protective cases and the comb must be visible from both sides. Place labels at the right top corner of the vertical transparent face of the case and the duplicate on the top of the horizontal bar of the frame itself. Plastic foundation is not permitted in any class.</p>



Display of beeswax flowers, see class 55

7	<p>► WAX: All wax exhibited except in Candle Class 51 and Classes 54-55 and 83, must be the bona fide produce of the Exhibitor's bees, unless otherwise specified in the class description. Wax may be exhibited polished or unpolished at the discretion of the Exhibitor. If a show case is used it must not exceed 300mm square (12 inch). If a show case is not used a board and plastic bag will be provided by the Show.</p> <p>a. Large blocks of wax, should be unpatterned. One label should be affixed to the display board provided by the Show and the other on the surface of the wax, to be shown uppermost towards the bottom edge (not on the upper surface). If a show case is used for wax, one label must be affixed on the glass and the duplicate on the surface of the wax to be shown uppermost towards the bottom edge (not on the upper surface).</p> <p>b. Small blocks of wax shall have a label affixed to the bottom of each item and one on the display board.</p> <p>c. Candles where possible the label is to be affixed on the side of the candle, 10-15mm above the base, parallel to the bottom. For small candles and those with a relief decoration, place the labels on the base of the candles. To be displayed flat. After judging these will be mounted by the stewards on a fixed base which will be provided by and remain the property of the National Honey Show. No colouring allowed unless the class states it is permissible.</p> <p>d. Moulded Models affix the labels one to each model and one to the display board (if used) or the table.</p> <p>e. Non-Moulded Model affix the label on a visible surface and on the display board (if used) or table.</p> <p>f. Wax Flowers affix the label on a visible surface of the container holding the flowers and on the table.</p>
8	<p>► MEAD: shall be exhibited in clear colourless or slightly green-tinted round shouldered Bordeaux style wine bottles of 70/75cl capacity, bottles must be PUNTED with no lettering or ornamentation. Bottles with shallow punts are acceptable.</p> <p>Only cork stoppers with white plastic flanges are to be used. There should be approximately 20mm from the bottom of the cork to the liquid.</p> <p>No alcohol may be added. No flavouring to be added to Mead, but additions such as acids, nutrients and tannin are permitted.</p> <p>The labels, which must not be altered, shall be affixed on bottles to allow between 10 and 15mm between the edge of the label and the bottom of the bottle. For Classes 62-64, 234, 251, 310 and 346 the Entries Secretary will provide a plain white label for you to specify whether it is sweet or dry and which mead type you are entering. The label should be placed 25mm above the NHS entry label.</p>
9	<p>► CONFECTIONERY and MARMALADE: All food classes need to be produced to a standard suitable for sale to the public, and in full compliance with food safety requirements.</p> <p>a. Decorated cake shall be displayed on a 23cm cake board supplied by the exhibitor. A cake dome will be supplied by the Show. One label to be affixed to the board (where this isn't possible, attach the label to the cake using a cocktail stick), one on the dome and one to the recipe.</p> <p>b. Cakes and biscuits shall be displayed on a cake board in a clear plastic bag, both supplied by the Show at the time of staging. One label to be affixed to the board, one to the bag and where a recipe is to be submitted, one to the recipe.</p> <p>c. Honey Sweets one label to be affixed to the lid, the other to the list of ingredients.</p> <p>d. Marmalade one label attached to each jar and one to the recipe. One jar will be judged and the second is donated for sale by the Show.</p>
10	<p>VINEGAR: shall be delivered in 2 matching bottles of minimum 100ml capacity. One bottle will be judged and the second is donated for sale by the Show.</p>

11	DISPLAY and DESIGN CLASSES: One label will be provided which shall be affixed to the display base or item. The judges will taste the honey and mead. Any items that are for sale should conform to the latest legislation.
12	Uniformity: When a Class requires the staging of more than one exhibit of the same type, the containers (when used) and the exhibits shall be matching in all respects. Mould marks are not relevant.
13	► Awards: Exhibitors may make more than one entry in a Class, up to a maximum of three , except classes 5-7 and 321-323 where only one entry is permitted. No single exhibit may be shown in more than one Class and an Exhibitor shall not be entitled to more than one award in any one Class. An exhibitor may make an individual and a joint entry in the same class but these will be deemed to be duplicate entries. Multiple owners, when exhibiting, will be considered as one person. At the Judges Referees' discretion, a fourth place may be awarded where entry numbers exceed 20 entrants.
14	Caution: No exhibit or any part thereof may be removed until after the close of the Show, except as provided in Rule 20. No exhibit may be tasted or in any way interfered with by the Exhibitor or any person during the Show without the authority of the Appeals Panel.
15	Losses and Damage: The National Honey Show takes every effort to secure exhibits at all times, but cannot be held responsible for uncollected exhibits nor for any losses or damage.
16	Adulteration: If any exhibit is found to be adulterated, the penalty shall be disqualification. Exhibitors will be notified by email where possible on the day of judging.



Example of a decorated design in honeycomb, see Class 82.

17	Disqualification: The Committee reserves the right to refuse any entry or exhibit. Exhibitors will be notified by email where possible on the day of judging.		
18	Objections: Any protest by an Exhibitor must be made in writing to the General Secretary by 3pm on the Friday of the Show for consideration by an Appeals Panel, consisting of the Judges' Referee, the General Secretary and one other Judge who is not otherwise involved with the objection. The objection must be accompanied by a deposit of £20. Should the protest be sustained by the Appeals Panel or be considered reasonable, the deposit will be returned.		
19	Powers of Appeals Panel: The Appeals Panel is empowered to: a. Increase the number and value of prizes and/or awards in any Class should the number and high standard warrant their so doing. b. Withhold prizes in cases of insufficient merit or entries. c. Submit any exhibit for analysis. d. Sell, or otherwise dispose of, any honey damaged in transit (or reduced in value by any other means) or return the same to the Exhibitor. e. Retain all or any part of any exhibit concerning which a protest has been made until a decision upon such protest has been taken. f. Decide any question as to the interpretation of the foregoing rules and regulations. g. The decisions of the Appeals Panel on any matter whatsoever, under or in relation to the foregoing rules and regulations, or on any protest or objection in relation thereto or to any exhibit, shall be final and conclusive.		
20	<p>► All Gift Class Exhibits shall become the property of the National Honey Show Ltd. and will be sold for the benefit of show funds. If you wish to buy back your own entries, then you MUST signify this on the entry form. There is no entry fee for gift classes.</p> <p>BUYING BACK CHARGES FOR GIFT CLASSES:</p>		
	454g (1lb) jar	227g (8oz) jar	
Honey	£8.00	£5.00	
Heather Honey	£11.00	£8.00	
Section - square	£11.00	Section - round	£11.00
Heather section	£13.00	Cut comb	£8.00
Confectionery	£8.00	Cakes	£8.00
Marmalade	£3.50	Decorated Cakes	£12.00
Honey Vinegar	£2.00		
6 Wax Blocks	£6.00	Candles (set of 3)	£8.00

21	Challenge Cups and Trophies won last year should be returned cleaned, in their boxes and delivered by hand to the organisers of the Show on the Wednesday of the show week.
22	Declaration Exhibitors must complete the declaration on the front of the entry form and pay all relevant fees for their entries to be valid.
23	► Business Cards A small supply of business cards may be supplied in a sealed envelope supplied by the entries secretary for exhibits in classes 90-91 and 93, these will be placed by the exhibit after judging has taken place.
24	<p>Labelling Regulations</p> <p>The regulations have been interpreted slightly differently by Trading Standards departments in many areas. For the purpose of the National Honey Show all classes requiring the Exhibitor's own labels must comply with the following requirements which must all appear in the same field of view:</p> <p>a. The word HONEY which may be prefixed with the type of honey and/or area of origin. e.g. New Forest Heather Honey.</p> <p>b. The metric weight must appear – figures to be at least 4mm high for jars exceeding 200g to 1kg weights. If the imperial weight is shown it must be in close proximity to the metric and be less prominent. The 'e' symbol if used will be ignored.</p> <p>c. Your name and residential address including postcode must appear on the label.</p> <p>d. The country of origin must be shown on the label. e.g. 'Produce of England' The country name alone at the end of your address is not sufficient.</p> <p>e. A 'best before' date must appear (suggest 2-5 years) or an indication of where it can be found. e.g.. for 'best before' see base of jar. If the date is given in full i.e. day, month and year there is no need for a lot number.</p> <p>For full labelling regulations, please refer to the Honey Regulations 2015.</p>
25	No mains electricity will be available for any exhibit.
26	The National Honey Show cannot prevent the photographing of exhibits.
27	► For classes 89-109, 315-316 and 318, Exhibits previously entered at the Show, whether prize winners or not, may not be entered in the same class.
28	► NHS judges are not permitted to enter classes 5, 6 or 7.

SCHEDULE OF CLASSES

For Rules and Regulations see pages 16-21

For details of cups, trophies and other awards see pages 5-11

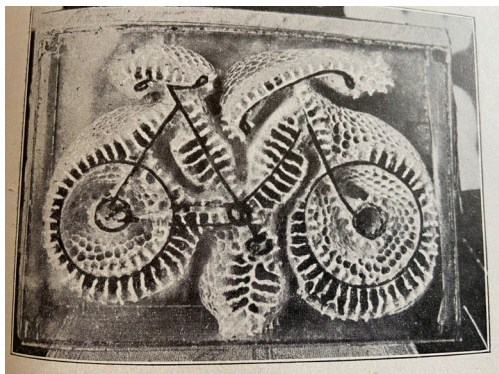
Unless otherwise stated, all exhibits will be staged by Show Stewards.

OPEN TO THE WORLD (No entry fee)

Rule 5a does not apply to classes 1-6, but jars must be uniform in size and shape.

Following difficulties experienced in previous years, Overseas Exhibitors are reminded of EU rules. UK Customs are implementing an EU Council Directive 95/23/EC dated 29 April 1996. Please check import requirements before entering the UK. Current legislation restricts imports to 2kg of honey (gross weight including jars). These restrictions relate to honey but have no impact on other classes.

1.	Twenty four Jars of Honey. The exhibit may consist of honey of one, two, three or four kinds, in equal numbers. Rule 3b applies. First: Hamlin Cup, 'Gold Medal' and £50; Second: 'Silver Medal' and £30, Third: 'Bronze Medal' and £20; Fourth: £10. (Endowed by R Maurer)
2.	► Two Jars of Clear Honey, A matched pair in any type and size of clear, colourless, commercially obtainable glass or plastic container up to 500g net, demonstrating the quality, economical packaging and attractiveness of honey as a marketable commodity. Only labels supplied by the NHS to be affixed to the containers. First: £20; Second: £14; Third: £10. (Sponsor: Freeman & Harding Ltd)
3.	► Three Jars of Honey, matched jars of any type and size of clear, colourless, commercially obtainable glass or plastic container up to 500g net. Any one colour or naturally crystallised (not stirred), First: Hender Cup and 'Gold Medal' and £30; Second: 'Silver Medal' and £20; Third: 'Bronze Medal' and £10.
5.	Two Jars of Liquid Honey. Judges comments will be provided for every exhibit for this class. Prize Cards will be awarded but no prize money. No more than one entry per exhibitor. (Rule 13 does not apply, rule 28 applies)
6.	Two Jars of Set Honey. Judges comments will be provided for every exhibit for this class. Prize Cards will be awarded but no prize money. No more than one entry per exhibitor. (Rule 13 does not apply, rule 28 applies)
7.	► Six 27-29g (1oz) Blocks, matching in all respects. Judges comments will be provided for every exhibit for this class. Prize Cards will be awarded but no prize money. No more than one entry per exhibitor. (Rule 13 does not apply, rules 7 and 28 apply)



Example of a decorated design in honeycomb, see Class 82.

CLASSES OPEN TO THE WORLD EXCEPT FOR THE BRITISH ISLES, THE CHANNEL ISLES AND THE REPUBLIC OF IRELAND (No entry fee) Rule 5a does not apply but jars must be uniform in size and shape.

9.	<p>► Two Jars of Honey. A matching pair of any type and size of clear colourless glass or plastic container up to 500g net. Only labels supplied by the NHS to be affixed to the containers. Labels must be as near to the correct place as the pattern of container allows Any one colour or naturally crystallised (not stirred). First: 'Gold Medal' and £30; Second: 'Silver Medal' and £20; Third: 'Bronze Medal' and £10.</p>
10.	<p>► One Jar of Clear Honey. One container of any type and size of clear colourless glass or plastic container up to 500g net. Only labels supplied by the NHS to be affixed to the container. Labels must be as near to the correct place as the pattern of container allows. First: Award of Ukraine and £30; Second: £20; Third: £10. (Sponsor Mr R. Maurer)</p>
11.	<p>► Three Matching Beeswax Candles (Gift) up to and including 35mm (1½ in) in diameter, one to be lit by the judge. Rule 7 applies. First: £20; Second: £14; Third: £10.</p>
12.	<p>► One Jar of Clear Honey from a Beekeeping Project run by a Charitable Organisation. A container of any type and size of clear colourless glass or plastic container up to 500g net from any beekeeping project. Only labels supplied by the NHS to be affixed to the container. Labels must be as near to the correct place as the pattern of container allows First: £20; Second: £14; Third: £10.</p>

CLASSES FROM 15 to 42 INCLUSIVE ARE OPEN TO ALL BEEKEEPERS IN THE BRITISH ISLES INCLUDING THE REPUBLIC OF IRELAND (NHS Members free, non members £2 per entry.)

15.	<p>► Nine Jars, One shallow Frame of Honey suitable for extraction and Six 27-29g (1oz) Blocks, matching in all respects. The jars must be three each of Light, Medium and Naturally Crystallised (not stirred). (Rules 5, 6 and 7 apply.) First: Crystal Palace Cup and £10; Second £7; Third £5. (Endowed by Warwickshire BKA)</p>
-----	---



Example of nuts and/or fruit, preserved in Honey, see Class 86

DISPLAY (NHS Members free, non members £2 per entry.) Rule 5a does not apply, rules 3b and 11 apply

16.	Decorative Exhibit to Display Honey together with pure Beeswax or Mead or both. (In addition to decorative material, coloured Beeswax and any size or shape jar may be used). Quantity of Honey staged to be at least 7.25kg (16 lb). Base size not to exceed 1000mm x 1000mm. Maximum height 1500mm from the table top. Dimensions must be stated on the entry form. First: The Ross Rose Bowl and £50; Second: £30; Third: £20; Fourth: £10. (Endowed by Mrs J Beavington)
17.	Counter Display of extracted Honey Only. 1.5kg to 5.5kg (3 lb to 12 lb) extracted Honey to be exhibited in containers of any shape, type or size, labelled with the Exhibitor's own labels including name and address and in any form of display. Decorative material may be used, but not other products of the hive. Display is not to exceed 600mm x 600mm Dimensions must be stated on the entry form. To be judged for quality and sales appeal. The object of this class is to encourage originality and artistry in the presentation of honey for public sale. Rule 24 applies. First: Badgerdell Cup and £20; Second: £10; Third: £5. (Sponsor: Cheshire BKA)

EXTRACTED HONEY Rule 5 applies **(NHS Members free, non members £2 per entry.)**

25.	Two Jars Light. First: Plender Cup and £10; Second: £7; Third: £5; Fourth: £2.
26.	Two Jars Medium. First: E.H. Thorne Trophy and £10; Second: £7; Third: £5; Fourth: £2.
27.	Two Jars Dark. First: The Chomhnascadh Cumann Beachairí na h-Éireann (FIBKA) Trophy and £10; Second: £7; Third: £5; Fourth: £2. (Endowed by MJ Badger, MBE)
28.	Two Jars Chunk. (Should contain approximately 50% cut comb). First: £10; Second: £7; Third: £5. (Sponsor: Bucks County BKA)
29.	Two Jars Ling Heather. First: The John Sturdy Cup and £10; Second: £7; Third: £5. (see Trophy Note 13). (Endowed by Devon BKA)
30.	Two Jars Soft Set. First: £10; Second: £7; Third: £5. (see Trophy Note 4) (Sponsor: Bucks County BKA).
31.	Two Jars Naturally Crystallised (not stirred). First: £10; Second: £7; Third: £5. (Endowed by Northamptonshire BKA)
32.	Six Jars of Honey, any type but all matching, produced and entered by an Association or Branch apiary. No entry fee. (Rule 5a does not apply). First: £10; Second: £7; Third: £5. (Endowed by Surrey BKA)
33.	Three Jars of Different Types of Honey, any combination, from. Light, Medium, Dark, Chunk, Soft Set, Naturally Crystallised or Heather. First: £20; Second: £14; Third: £10 (Endowed by Newhouse Apiary)
34.	► Twelve Jars Light, Medium, Dark, Crystallised or Soft Set, (Ling Heather excluded) but all of the same; to be shown in 340g, 454g (1 lb) or 500g jars labelled as offered for sale. Besides the quality of the honey the attractiveness of the labels will be taken into consideration by the judges. (Rule 5c does not apply). First: Apis Club Commemoration Cup and £25; Second: £15; Third: £10.

COMB HONEY Rule 6 applies. (NHS Members free, non members £2 per entry.)

35.	Two Matching Square Sections Ling Heather. First: E. Graham Burt Cup and £10; Second: £7; Third: £5. (See Trophy Note 13) (Endowed by Devon BKA)
36.	Two Matching Square Sections. (Open only to Exhibitors who have not previously won this trophy). First: Burnett Cup and £10; Second: £7; Third: £5. (Endowed by Worcestershire BKA).
37.	Two Matching Square Sections (free from Ling Heather) First : The McCormick Cup and £10; Second: £7; Third: £5.
38.	Two Matching Round Sections. First: £10; Second: £7; Third: £5. (Endowed by Bornemouth and Dorset South BKA)
39.	One Frame of Honey any size (free from Ling Heather). To be suitable for extracting. First: £10; Second: £7; Third: £5. (See Trophy Note 5)
40.	One Frame of Ling Heather, any size. Rule 6 does not apply. First: £10; Second: £7; Third: £5. (See Trophy Note 13). (Sponsored by BIBBA)
41.	► Container of Cut Comb , (free from Ling Heather), gross weight 200g-340g. First: Combings Cup and £10; Second: £7; Third: £5. (Endowed by Somerset BKA)
42.	► Container of Cut Comb. Ling Heather , gross weight 200g-340g. First: £10; Second: £7; Third: £5. (See Trophy Note 13)



Example of a decorated design in honeycomb, see Class 82.

CLASSES FROM 45 TO 109, inclusive, ARE OPEN TO THE WORLD

BEESWAX (NHS Members free, non members £2 per entry.) Rule 7 applies.

Prize money in the Beeswax Classes 45-56 has been donated by the Worshipful Company of Wax Chandlers.



45.	One Piece, not patterned, at least 454g (1lb) weight and at least 25mm (1in.) thick. First: The Wax Bowl and £10; Second: £7; Third: £5.
46.	One Piece, minimum weight 340g (12oz) prepared for commercial purposes (eg cosmetics). The block may be broken for judging so perfect moulding is not required. First: £10; Second: £7; Third: £5.
47.	Three Matching Plain Beeswax Candles, not patterned, up to and including 38mm (1½ inch) in diameter; all made by Moulding. One to be lit by the Judge. First: 'Gold Medal' and £10; Second: £7; Third: £5.
48.	Three Matching Plain Beeswax Candles, not patterned, over 38mm (1½ in.) in diameter, all made by Moulding. One to be lit by the Judge. First: 'Gold Medal' and £10; Second: £7; Third: £5.
49.	Three Matching Beeswax Candles. All to be made by dipping or pouring, no mould to be used. One to be lit by Judge. First: The Candlestick Trophy, 'Gold Medal' and £10; Second: £7; Third: £5.
50.	Three Ornamental Beeswax Candles made by moulding and matching in all respects. No colouring of wax or additional decoration permitted. One to be lit by the judge, First: £10; Second: £7; Third: £5.
51.	Two Decorative Beeswax Candles, made by rolling, colouring permitted, matching in all respects. One to be lit by the Judge. No flammable decoration other than beeswax permitted. First: £10; Second: £7; Third: £5.
52.	Two Matching Beeswax Candles made by moulding, using a hand-made mould, not commercially available. The mould is to be submitted with the candles. First: £10, Second: £7, Third: £5.
53.	Two Beeswax Models, each to be one piece, moulded and matching in all respects. Maximum size 450mm x 450mm. Dimensions must be stated on the entry form. Rule 3b applies. First: £10; Second: £7; Third: £5.
54.	A Beeswax Model/Display, not moulded. Colour and wire may be used if required, (Candles excluded). Maximum size 450mm x 450mm. Dimensions must be stated on the entry form. Rule 3b applies. First: £10; Second: £7; Third: £5.
55.	Display of Beeswax Flowers. Colouring and wire permitted. Container not to be judged. Rule 3b applies. First: The Liz and Mike Duffin Cup and £10; Second: £7; Third: £5.
56.	A Display of Beeswax, minimum six pieces, colouring permitted, displayed on a base maximum size 450mm x 450mm. Rule 3b applies. Dimensions must be stated on the entry form First: £10, Second: £7, Third: £5
57.	Beeswax Wrap, two matching pieces. Each 30cm square. Made from Beeswax only, no additional oils/resins permitted. A display board will be provided by the Show. One piece of wrap will be used to wrap a food item which will be supplied by the Show on Wednesday. Rule 3b applies. First: £10, Second: £7, Third: £5. (Sponsor: Guildford BKA)

MEAD. Rule 8 applies. (NHS Members free, non members £2 per entry.)

60.	Mead, Dry (one bottle). First: Mead Makers' Mazer and £10; Second: £7; Third: £5. (Endowed by Gloucestershire BKA)
61.	Mead, Sweet (one bottle). First: Millennium Mead Coaster and £10; Second: £7; Third: £5. (Sponsor: Guildford BKA)
62.	One bottle of Dry Mead and One bottle of Sweet Mead. First: The Harry Riches Memorial Trophy and £10; Second: £7; Third: £5.
63.	Metheglin or Hypocras, Dry or sweet (one bottle). . First: The Millennium Metheglin Coaster and £10; Second: £7; Third: £5. (Endowed by Hampshire BKA)
64.	Melomel or Pyment Dry or sweet (one bottle) First: £10; Second: £7; Third: £5.
65.	Dry Cyser (one bottle) First: £10; Second: £7; Third: £5.

HONEY BEER The Leslie Thorne Trophy will be awarded to the best entry in Classes 76 or 77

76.	Honey Beer, any style, 3 bottles or cans. (Entry Fee £10). The beer should be commercially available, correctly labelled for sale and honey must be an ingredient. First: 'Gold Medal'; Second: 'Silver Medal'; Third: 'Bronze Medal'
-----	---

(NHS Members free, non members £2 per entry.)

77.	Honey Beer, any style, 2 bottles, minimum 330ml, not commercially available. Honey must be an ingredient. First: £10; Second: £7; Third: £5.
78.	Braggot. 2 bottles, minimum 330ml, not commercially available. Honey must be an ingredient. First: £10; Second: £7; Third: £5.

DISPLAY CLASSES, Rules 3b and 11 apply**(NHS Members free, non members £2 per entry.)**

80.	<p>► A display of Home-produced Products containing Honey and/or Beeswax, each item must be labelled with ingredients listed (not labelled for sale). Display dimensions must not exceed 600mm x 600mm. Dimensions must be stated on the entry form. All displays to be between 6 and 10 different items containing honey and/or beeswax as ingredients. All containers will be opened for judging. Decorative materials may be used. This is a good class for the encouragement of home craft and artistry. The display should include items in which honey and/or beeswax plays an important part. (Candles, Honey and Mead are not permitted even as decorative material) First: The Jill Foster Memorial Trophy and £10; Second: £7; Third: £5.</p>
81.	<p>► An attractive Hand Made Model as part of a display incorporating Honey for Sale. The Exhibitor's own labels including name and address must be used. Maximum size 600mm x 600mm. Dimensions must be stated on the entry form, Judges will taste the honey. (Rule 24 applies, rule 5a does not apply). First: National Cup and £20; Second: £10; Third: £5.</p>

NATIONAL HONEY SHOW SPECIAL CENTENARY CLASSES. Entries are invited for these special classes to celebrate the centenary of the Show in 2023. N.B. Where dimensions are required they must be stated on the entry form. **(No entry fee)**

Guidance Notes and Rules for the Centenary Classes 82-87

Class 82. Decorative Design in Honeycomb, see photos on pages 19, 22 and 25. These are created by giving the bees a starter strip of wax in a shape, usually in a shallow eke above the brood box or super. They are usually displayed in the eke with a clear covering to show the design.

Labelling: affix one label on the top right hand corner of the clear cover. Follow this link for an article in the British Bee Journal of 1901 explaining how these honeycombs are produced.

<https://www.biodiversitylibrary.org/page/25732909#page/193/mode/1up>

Class 83. A Shop Window Display. Honey (extracted & comb), Beeswax Candles and Blocks. See photos on pages 3 and 11. This is for Beekeeping Associations and Branches to enter. A shop window display is different from the Class 16 display, it is viewed from the front only. Extracted honey is to be exhibited in any type and size of clear, colourless, commercially obtainable glass or plastic container. Comb honey should be in commercial packaging. Decorative materials may be used. The area for these displays will be against a panel, which can be used to pin or glue things to or used as a backdrop for your display. We hope associations and groups will support this class. All products must be labelled for sale but can be from many individuals. Displays can have a theme if you wish. (Rule 5a does not apply. Rules 6, 7 and 11 apply and Rule 24 applies to honey and comb.) Candles: The below label is the minimum required for labelling candles for sale. For full details - see www.britishcandles.org.



Never leave a burning candle unattended
Burn candle out of reach of children and pets
Always leave at least 10m between burning candles
Do not burn candles on or near anything that can catch fire

Class 84. Observation Hive.

Labelling: affix the label on the top right hand corner of the glass of the observation hive and one on the information board (if using).

Class 85. A piece of Craft or Artwork on the theme of Centenary Celebration of the National Honey Show.

Labelling: Rule 11 applies

Class 86. Two Jars of Nuts and/or Fruit preserved in Honey. Two Jars of Nuts and/or Fruit preserved in Honey see photo on page 23. These decorative jars are popular throughout Eastern Europe and the Middle East. Patterns and shapes can be created using different fruits or nuts to produce an attractive display. The exhibits will be judged on attractiveness and complexity of design.

Labelling: Rule 4 applies.

Class 87. A Display of Honey and Pollen producing Plants.

Labelling: Affix the label on a visible surface of the container holding the flowers and on the explanation card or on the display board in the case of pressed flowers.

NATIONAL HONEY SHOW SPECIAL CENTENARY CLASSES. (No entry fee)

Please read Guidance and Rules on the previous page.

All Centenary Classes are sponsored by Mrs J Beavington

82.	<p>► A Decorative Design in Honeycomb, must be built by Honey Bees. Maximum size 600mm x 600mm. Dimensions to be stated on the form. First: £50; Second: £30; Third: £20.</p>
83.	<p>► A Shop Window Display. Honey (extracted & comb), Beeswax Candles and Blocks. This is a Class for Associations and Groups, not individuals. Honey and candles to be labelled with the exhibitor's own labels. (Mead is not permitted). Decorative materials are acceptable. The area allocated for each display is 600mm(d) x 1200mm(w) x 1600mm(h). To be judged for quality and sales appeal. Rules 6, 7 and 24 apply. First: £100; Second: £50; Third: £25.</p>
84.	<p>► Observation Hive. A mock up of an observation hive as taken to a show (no live bees), with full descriptions of what the observer can see. Commercially available photographs of frames are acceptable. The required display area must not exceed 600mm x 600mm. Dimensions to be stated on the form. First: £50; Second: £30; Third: £20.</p>
85.	<p>► A piece of Craft or Artwork on the theme of Centenary Celebration of the National Honey Show. The required display area must not exceed 600mm x 600mm. Dimensions to be stated on the form. A brief description of the exhibit is permitted. First: £50; Second: £30; Third: £20.</p>
86.	<p>► Two Jars of Nuts and/or Fruit preserved in Honey. A matched pair in any type and size of clear, colourless, commercially obtainable glass or plastic container up to 500g net, demonstrating the quality and attractiveness of product as a marketable commodity. Only labels supplied by the NHS to be affixed to the containers. First: £30; Second: £20; Third: £10.</p>
87.	<p>► A Display of Honey and Pollen producing Plants, in a dried or pressed state. The display should include a card stating the name of each plant, its time of flowering, duration of flowering and any other particulars calculated to be of interest to beekeepers. The required display area must not exceed 600mm x 600mm. Dimensions to be stated on the form. First: £30; Second: £20; Third: £10.</p>

DESIGN CLASSES N.B. Where dimensions are required they must be stated on the entry form. Failure to do so may result in disqualification. Rules 11 and 27 apply to Classes 89-92. **(NHS Members free, non members £2 per entry.)**

88.	<p>► A Honey Label. A standard label of your own design, actual size, to fit on a standard 227g, 340g or 454g jar (8oz, 12oz or 1lb jar) produced in any medium to comply with current UK regulations, to be displayed on an empty honey jar. (Rule 4 and 24 apply). First: £10; Second: £7; Third: £5. (Endowed by Reigate BKA)</p>
89.	<p>► Any Interesting or Instructive Exhibit related to bees or beekeeping not including live bees. (Open to individuals only) The required display area must not exceed 600mm x 600mm for bench display or 1200mm x 1000mm of floor space. Dimensions must be stated on the entry form. Written explanation of exhibit is permitted. (Rule 3b applies). First: Moorcroft Bowl and £10; Second: £7; Third: £5.</p>
90.	<p>► Any Decorative or Artistic Exhibit except Needlecraft relating to bees or beekeeping. (Open to individuals only.) The required display area must not exceed 600mm x 600mm. Dimensions must be stated on the entry form. A brief description of exhibit is permitted. (Rules 3b and 23 apply). First: £10; Second: £7; Third: £5. (Sponsor: Dorset BKA)</p>
91.	<p>► Any Decorative or Artistic Exhibit of Needlecraft, which may include lace or crochet, relating to bees or beekeeping. The back of the work must be accessible for inspection. Title permitted. A detailed description of the item may be displayed after judging. (Open to individuals only). The required display area must not exceed 600mm x 600mm. Dimensions must be stated on the entry form. (Rules 3b and 23 apply). First: £10; Second: £7; Third: £5. (Endowed by Mrs C Wilkinson)</p>
92.	<p>► A Practical Invention by the Exhibitor directly related to bees or beekeeping (No live bees). Dimensions must be stated on the entry form. Written explanation of exhibit. The judges will be looking for genuine innovation rather than minor variations on old ideas. (Rule 3b applies). First: The HJ Wadey Trophy and £10; Second: £7; Third: £5.</p>

EXHIBITION Class (no entry fee) Rules 3b, 11, 23 and 27 apply

93.	<p>► Any Decorative or Artistic Exhibit except Needlecraft, relating to bees or beekeeping which may have been commissioned and not necessarily the work of the exhibitor. The required display area must not exceed 600mm x 600mm. Dimensions must be stated on the entry form. Brief description of exhibit is permitted. Exhibition class only, this will not be judged and no awards will be made.</p>
-----	--

SKEP Class (NHS Members free, non members £2 per entry.) Rule 27 applies

94.	<p>Skep To be made by the Exhibitor. Using traditional materials and suitable for use to collect swarms or house a colony. If used, it must be in a clean condition with no comb inside. First: £10; Second: £7; Third: £5.</p>
-----	--

GUIDANCE NOTES AND RULES FOR PHOTOGRAPHIC, MICROSCOPY, VIDEOS AND ESSAY CLASSES. Rules 1, 3a, 15 and 27 apply.

Classes 99-101 and 103-106 will be displayed on the NHS website. The copyright remains with the exhibitor. Digital Images are permitted.

All exhibits in these classes shall be submitted to the Convenor in accordance with the instructions issued by the Entries' Secretary at the time of issuing labels.

Classes 99 and 102 are sponsored by the BBKA, who will receive copies of the cash prize entries for the BBKA Library. BBKA will have the right to publish cash prize winning entries.

Class 99 may include music. Exhibitors need to comply with copyright regulations. An entry being awarded a prize does not imply that the National Honey Show is satisfied that the exhibit complies with regulations. An exhibit that incorporates any music, other than any that has been specially composed, should be accompanied by an authorisation certificate number.

Classes 95-98 are sponsored by Bee Craft Ltd. Copies of cash winning entries will be given to the sponsor with a view to publication in that Journal. Winning entrants will be asked to provide the digital files to Bee Craft Ltd.

Photographic Classes 95 – 98 and 318

All photographic exhibits must have been taken, but not necessarily processed, by the exhibitor. The subject should be connected with bees or beekeeping.

Each photograph should be properly mounted on card.

- There must be a border of at least 25mm on each of the four sides.
- The mounting card can be of any colour.
- The mount card measures no more than 260mm x 347mm
- The class label must be placed on the front of the mount.
- Photographs will be mounted for display using velcro directly onto the mount
- A close up or macro photograph is one where the main subject matter is a minimum of 30% of the print.

Digital Image Class 99

- The images must be in 'jpeg' format at an appropriate resolution in an electronic format, suitable for use as a group presentation
- The set must be accompanied by an appropriate commentary which can be either a written or typed/printed script and appropriate words may be included in the presentation.
- Power Point (or other) integrated presentations are permitted.

Video, Essay and Microscopy Classes, Guidance continued.

Classes 101-104 and 107 all need to be submitted electronically to the convenor.

Video Clip Class 101

- Suitable for viewing on a domestic computer system. The clip should be shot in landscape format.

Essay Class 102

- Not more than 2000 words, excluding references.

Short Article Class 103

- Maximum 1000 words
- Photographs may be incorporated

How To Guide Class 104

- Photographs may be incorporated

Limerick Class 106

- Can contain original artwork but entry will be judged on rhyme meter, humour and relevance to beekeeping
- To be submitted as a hard copy

Newsletter Class 107

- Newsletters should be submitted in pdf format, plus a hard copy of each newsletter.

Microscopy Class 108-109 and 315-316

- Microscopy slides must be the work of the exhibitor.
- The slide must be correctly labelled with:
 - * the subject of the slide on the left-hand side.
 - * the class label on the right-hand side of the slide.
- Please package the slides carefully to avoid damage in transit.



PHOTOGRAPHIC, MICROSCOPY, VIDEOS AND ESSAY CLASSES

(NHS Members free, Non members £2 each entry).

The Adrian Waring Trophy will be awarded to the exhibitor with most points in Classes 95-98

95.	Photomicrograph in colour or black/white , specimen prepared by exhibitor. Should have a label on front stating title and degree of magnification. First: £10; Second: £7; Third: £5. (Sponsor: Bee Craft Ltd)
96.	Colour Print, not Close up . First: £10; Second: £7; Third: £5. (Sponsor: Bee Craft Ltd)
97.	Colour Print, Close-up or Macro, not Photomicrograph . First: £10; Second: £7; Third £5. (Sponsor: Bee Craft Ltd)
98.	Black & White Print . First: £10; Second: £7; Third: £5. (Sponsor: Bee Craft Ltd)
99.	► Set of Digital Images . Between 12 and 24 in number to illustrate “ Education of Beekeepers ” in a form suitable for a lecture. First: £25; Second: £20; Third: £15. (Sponsor: The British Beekeepers’ Association). The subject for 2024 is “Jobs for the ‘girls’ ”
101.	Video Clip on a Beekeeping Subject maximum duration 30 seconds . To be judged on its beekeeping interest. First: £20; Second: £14; Third: £10 (Endowed by Newhouse Apiary)
102.	► BBKA Essay . Not more than 2000 words, excluding references. “ The Contribution of Honey Shows to Beekeeping ”. To be submitted in pdf format. First: £20; Second: £10; Third: £5. (Sponsor: The British Beekeepers’ Association). The subject for 2024 is “What has my Association ever done for Me”
103.	A Short Article Not more than 1000 words, describing an aspect of honeybee life that would be of interest to the general public to be submitted in pdf format. First: £10; Second: £7; Third: £5
104.	► Create a short “How to ... “ guide to help other beekeepers. The topic for this year is “ How to prepare Soft Set Honey. ” Photographs can be incorporated. Please incorporate any relevant health and safety advice into your guide. To be submitted in pdf format. First: £10; Second: £7; Third: £5. The subject for 2024 is “ How to prepare Liquid Honey for Show ”
106.	Limerick about bees or beekeeping . To be submitted as a hard copy and may contain original artwork. First: £10; Second: £7; Third: £5.
107.	Newsletter . No entry fee. Three latest editions of an Association/Branch newsletter, to be submitted in pdf format plus one hard copy of each newsletter. First: £10; Second: £7; Third: £5.
108.	One Microscope slide prepared by the Exhibitor, 3” x 1” , subject: pollen. First: £10; Second: £7; Third: £5. (Sponsor: Bee Craft Ltd)
109.	One Microscope slide prepared by the Exhibitor, 3” x 1” , subject: honey bee anatomy. First: £10; Second: £7; Third: £5. (Sponsor: Bee Craft Ltd)

GIFT CLASSES Nos. 110 – 138 (No entry fee). Rule 20 applies

The Mrs BW Hamlin Cup will be awarded for the best first prize entry in Classes 110-115.

In addition, for Classes 110-120, Freeman & Harding Ltd. will donate vouchers for goods to the value of £10 (1st) and £5 (2nd) prize winners.

The Anderson Memorial Cup will be awarded to the best 1st prize entry in Classes 118 and 119.

The Two Georges Skep will be awarded for most points in Classes 110-138.

HONEY

110.	Two Jars Light. First: £10; Second: £7; Third: £5.
111.	Two Jars Medium. First: £10; Second: £7; Third: £5.
112.	Two Jars Dark. First: £10; Second: £7; Third: £5.
113.	Two Jars Ling Heather. First: £10; Second: £7; Third: £5. (See Trophy Note 13) (Sponsor Wiltshire BKA)
114.	Two Jars Naturally Crystallised (not stirred). First: £10; Second: £7; Third: £5. (Sponsor Wiltshire BKA)
115.	Two Jars Soft Set. First: £10; Second: £7; Third: £5. (Sponsor: Mr SB Guest)
116.	► One Section, Square or Round. First: £10; Second: £7; Third: £5 (Rule 6 applies)
117.	► One Container of Cut Comb, labelled as for sale. Gross weight 200g-340g. First: £10; Second: £7; Third: £5. (Rule 6 and 24 applies.)
118.	Six 227g (½lb) Jars Dark. First: £10; Second: £7; Third: £5.
119.	Six 227g (½lb) Jars Ling Heather. First: £10; Second: £7; Third: £5. (See Trophy Note 13).
120.	► Two Jars Chunk. (Should contain approximately 50% cut comb). First: £10; Second: £7; Third: £5.

BEESWAX Rule 7 applies

121.	► Six 27-29g (1oz) Blocks, matching in all respects. First: £10; Second: £7; Third: £5. (Sponsor: Lancashire and North West BKA)
122.	Three Ornamental Beeswax Candles made by moulding and matching in all respects. No colouring of wax or additional decoration permitted. One to be lit by the judge, two to be sold. First: £10; Second: £7; Third: £5 (Sponsor: J Chandler).

CONFECTIONERY

Rules 9 and 20 Apply

126.	<p>► Decorated Honey Sponge on the Theme of the National Honey Show Centenary. Maximum tin size 19cm. Ingredients and method to be displayed. First: £10; Second: £7; Third: £5.</p>
127.	<p>HONEY SULTANA AND CHERRY CAKE. Exhibits must be made to this recipe. 200g self raising flour, 175g honey, 110g butter, 2 medium eggs, 175g sultanas, 110g glace cherries.</p> <p>Preparation; Wash the sultanas and cherries to remove any syrup and dry them. Halve the cherries, Cream the butter with honey until light and fluffy. In a separate bowl, beat the eggs together and gradually add the beaten eggs to the butter mixture a little at a time, beating between each addition. Sieve the flour and mix the fruit with it to ensure the fruit is dry. Gradually fold in the flour and fruit. Add a little milk, if necessary, to achieve a dropping consistency. Put the mixture into an 18 cm lined round cake tin. Bake at 160°C/ (140°C fan)/325°F/gas mark 3 for approximately 1hr 30mins until the cake is firm. Timing is for conventional ovens and is a guide only as appliances vary. First: Dewey Cake Cup and £10; Second: £7; Third: £5; Fourth: £2.</p>
128.	<p>DATE CAKE. Exhibits must be made to this recipe.</p> <p>Ingredients; 175g plain flour, 25g butter, 25g sugar, 1 egg, 100g dates, 225g honey, pinch of salt, 5tbs boiling water, ½tsp bicarbonate of soda.</p> <p>Preparation; Grease and line a 1lb loaf tin. Stone and chop dates and pour the 5tbs of boiling water over them. Dissolve bicarbonate of soda in water drained from the dates. Beat egg, sift dry ingredients, rub in butter, add sugar, make well in the centre and add egg, water, dates and honey. Mix thoroughly and turn into prepared loaf tin, Bake at 160°C/(140°C fan)/325°F/gas mark 3 for about 1hr. First: £10; Second: £7; Third: £5.</p>
129.	<p>► Tray Bake, containing Honey. Six pieces from the same recipe, approx 50mm square to be displayed on the board provided by the Show. Ingredients and method to be submitted. First: £10; Second: £7; Third: £5.</p>
130.	<p>► Six Small Honey Biscuits or Cookies. Not in paper cases, all the same recipe. Ingredients and method to be submitted. First: £10; Second: £7; Third: £5.</p>
131.	<p>► Honey Sweets and/or Chocolates 450g-500g box (Gross weight). Displayed in a box with a transparent lid or covering. List of ingredients to be submitted. First: £10; Second: £7; Third: £5; Fourth: £2. (Endowed by CS Mence)</p>

MARMALADE Rules 9 and 20 apply

135.	<p>► Two Matching Jars Honey Marmalade. 340g or 454g. Ingredients and method be submitted. One jar to be judged, the other to be sold. First: £10; Second: £7; Third: £5.</p>
------	--

HONEY VINEGAR Rules 10 and 20 apply

138.	<p>► Two Matching Bottles of Honey Vinegar. One bottle to be judged, the other to be sold First: The Silver Goblet and £10; Second: £7; Third: £5.</p>
------	---

JUNIOR CLASSES to be the unaided work of the entrant. **Age on the first day of the show to be displayed on the front of the exhibit, using the label supplied except for Classes 142 and 144-146. (No entry fee)**

139.	A National Honey Show “100 year Celebration” Calligram Poem. A shape poem, where the design and layout of the letters creates a visual image related to the meaning of the words themselves. (Open to individuals only, under the age of 17 on the first day of the Show). First £10; Second: £7; Third £5
140.	Any Artistic, Decorative or Instructive Exhibit, relating to Bees and Beekeeping. (Open to individuals who are junior school age on the first day of the show). A written explanation of the exhibit is permitted. Dimensions not to exceed 600mm x 600mm. Dimensions to be stated on entry form. First £10; Second: £7; Third £5.
140a	An Artistic or Instructive Digital Exhibit relating to bees and beekeeping. Suitable for viewing on a domestic computer system. First £10; Second: £7; Third £5
141.	Any Artistic, Decorative, Interesting or Instructive Exhibit, relating to Bees or Beekeeping (Open to individuals only who are senior school age on the first day of the show). A written explanation of the exhibit is permitted. Dimensions not to exceed 600mm x 600mm. Dimensions to be stated on entry form First £10; Second: £7; Third £5. (Endowed by Revd HF Capener).
142.	Two Jars of Clear or Naturally Crystallised Honey produced by a School Apiary. Exempt from Rule 5a but jars have to be uniform in size and shape. Entry forms must be accompanied by a list of the signatures of the students taking part in the apiary, and be made in the name of the school and signed by the Instructor. Judges comments will be made. First: School Apiary Shield and vouchers to the value of £10; Second: value of £7; Third: the value of £5. Vouchers supplied by EH Thorne of Rand, Lincolnshire.
143.	“An Illustrated Beekeeping Note Book for the Active Season”. Kept and entered by an individual. (Open to individuals only, under the age of 17 on the first day of the Show). First: McKenna Cup, £10; Second: £7; Third: £5.
144.	Composite Class for Schools. Three jars of extracted Honey, any one colour; one frame of Honey, any size, suitable for extracting or one section or one piece of cut comb and five beeswax blocks each weighing between 25-30g. List of Signatures as for Class 142. First: Tollington Shield and £50; Second: £30; Third: £20. (Endowed by Bedfordshire BKA). Exempt from rule 5a. Rule 6 and 7 apply. Judges comments will be made.
145.	An exhibition of Beecraft by a Senior School or Senior Youth Group showing the educational value of beekeeping. The exhibit must be accompanied by a list of the signatures of the students taking part in the exhibit. The exhibit is limited to table space of 600mm x 1800mm. Each exhibit must be self-contained, the exhibitors providing any backing required; this must not exceed 1500mm in height above the table. Vertical supports for such backing may be clamped to the table. Dimensions to be stated on entry form. First: BBKA Schools Cup and £10; Second: £7; Third: £5.
146.	An exhibition of Beecraft by a Junior School or Junior Youth Group showing the educational value of beekeeping. The exhibit must be accompanied by a list of the signatures of the students taking part in the exhibit. The exhibit is limited to table space of 600mm x 1800mm. Each exhibit must be self-contained, the exhibitors providing any backing required; this must not exceed 1500mm in height above the table. Vertical supports for such backing may be clamped to the table. Dimensions to be stated on entry form. First: Rolt Trophy and vouchers to the value of £10; Second: £7; Third: £5.

NATIONAL HONEY SHOW CLASSES

Only open to Members of the National Honey Show. No Entry Fee.

The Members Cup is awarded to the member attaining most points in classes 151-168
The Thistle Cup is awarded to the Scottish Beekeeper, with apiaries in Scotland, attaining most points in classes 151-168

HONEY

151.	Two Jars Light. First: Jack Holt Trophy and £10; Second: £7; Third: £5. (Sponsor: West Norfolk and Kings Lynn BKA)
152.	Two Jars Medium. First: £10; Second: £7; Third: £5
153.	Two Jars Dark. First: £10; Second: £7; Third: £5
154.	Two Jars Naturally Crystallised (not stirred). First: £10; Second: £7; Third: £5
155.	Two Jars Soft Set First: £10; Second: £7; Third: £5. (See Trophy note 4)
156.	Two Jars Ling Heather. First: £10; Second: £7; Third: £5. (See Trophy Note 13)
157.	One Section, Square or Round, (free from Ling Heather) (Rule 6 applies) First: £10; Second: £7; Third: £5.
158.	One Section, Square or Round, Ling Heather (Rule 6 applies) First: £10; Second: £7; Third: £5. (See Trophy Note 13).
159.	One Frame of Honey, any source, any size, suitable for Extraction (if other than Ling, Rule 6 applies), First: £10; Second: £7; Third: £5. (See Trophy note 5).
160.	► Two Matching Containers of Cut Comb, (free from Ling Heather). Gross weight 200g-340g (Rule 6 applies). First: Chairman's Trophy and £10; Second: £7; Third: £5
161.	Two Jars of Soft Set Ling Heather blend. First: £10; Second: £7; Third: £5

BEESWAX Rule 7 applies

164.	One piece, not patterned, weight between 200-255g and not less than 19mm thick. First: T. Bradford Cup and £10; Second: £7; Third: £5 (Sponsor: The Worshipful Company of Wax Chandlers)
------	---

MEAD Rule 8 applies

167.	Dry (one bottle) First: Millennium Punch Bowl and £10; Second: £7; Third: £5
168.	Sweet (one bottle) First: Ison Quaich and £10; Second: £7; Third: £5

COUNTY CLASSES

Only entry fees indicated are payable, classes are open to non NHS Members

Kent Beekeepers' Association

Open only to members of Beekeeping Associations in Kent

The Commemoration Cup is awarded to the member attaining most points in classes 201-213

The Vincent Cup is awarded to the member attaining most points in

Classes 201-204 and 211-212

HONEY (£1 entry) Rule 5 applies

201.	Two Jars Light. First: £6; Second: £4; Third: £2.
202.	Two Jars Medium. First: Coronation Cup and £6; Second: £4; Third: £2.
203.	Two Jars Dark. First: £6; Second: £4; Third: £2.
204.	Two Jars Naturally Crystallised or Soft Set. First: £6; Second: £4; Third: £2.
205.	▶ Two Matching Containers of Cut Comb , (free from Ling), gross weight 200g-340g (Rule 6 applies). First: £6; Second: £4; Third: £2.
206.	One Frame of Honey , any size, suitable for extracting.(Rule 6 applies) First: Smith Cup and £6; Second: £4; Third: £2.

BEESWAX (£1 entry) Rule 7 applies

207.	One piece, not less than 18mm (¾in) thick, weight between 200-255g (7oz - 9oz). First: The Kent Wax Cup and £6; Second: £4; Third: £2.
208.	▶ Six 27-29g (1oz) Blocks Matching in all respects. First: Beeswax Cup and £6; Second: £4; Third: £2.

MEAD (£1 entry) (Rule 8 applies)

The Coronation Mead Mazer will be awarded for the best entry in Classes 209 or 210

209.	Dry, one Bottle. First: £6; Second: £4; Third: £2.
210.	Sweet, one Bottle. First: £6; Second: £4; Third: £2.

GIFT HONEY (no entry fee) (Rules 5 and 20 apply)

211.	One Jar Liquid, any colour. First: £6; Second: £4; Third: £2.
212.	One Jar Naturally Crystallised or Soft Set. First: £6; Second: £4; Third: £2.

NOVICES (no entry fee)

Open to any Member of a Beekeeping Association in Kent who has never won a cash prize for Honey at the National Honey Show. Rule 5 applies.

213.	Two Jars (any colour). First: Bee Cup and £6; Second: £4; Third: £2.
------	---

Surrey Beekeepers' Association

Open only to Members of the Surrey Beekeepers' Association whose Bees are in the County or within one mile of the 1964 County Boundary
Coronation Cup is awarded the member attaining most points in Classes 221-237

HONEY (£1 entry) Rule 5 applies

221.	Two Jars Light. First: £6; Second: £5; Third: £4.
222.	Two Jars Medium. First: £6; Second: £5; Third: £4.
223.	Two Jars Dark. First: £6; Second: £5; Third: £4.
224.	Two Jars Naturally Crystallised or Soft Set. First: £6; Second: £5; Third: £4.
225.	Two Jars of Liquid Honey, any one colour (limited to those who have not more than five Colonies at the time of entry). First: Egerton Smythe Cup, and £6; Second: £5; Third: £4.
226.	Three Matched Pairs of Jars, the pairs selected from Light, Medium, Dark or Crystallised. First: Lawrence Cup and £6; Second: £5; Third: £4
227.	► Two Matching Containers Cut Comb, (free from Ling). Gross weight 200g-340g (Rule 6 applies.) First: £6; Second: £5; Third: £4.
228.	One Frame of Honey, any size, suitable for extracting. (Rule 6 applies.) First: Hood Chalice and £6; Second: £5; Third: £4.

BEESWAX (£1 entry) Rule 7 applies

229.	One piece not less than 425g (15oz), not more than 480g (17oz) and not less than 25mm (1 in) thick. First: £6; Second: £5; Third: £4.
230.	► Not less than 425g (15oz) and not more than 480g (17oz) in 8 or 16 moulded pieces, matching in all respects. First: Silver Jubilee Bowl (see Trophy note 29); £6; Second: £5; Third: £4.
231.	Two Matching Plain Beeswax Candles, not patterned, up to and including 38mm (1½ inch) in diameter; all made by Moulding. One to be lit by the Judge. First: £6; Second: £5; Third: £4.
232.	Two Matching Beeswax Candles. All to be made by dipping or pouring, no mould to be used. One to be lit by Judge. First: £6; Second: £5; Third: £4.
233.	Two Decorative Beeswax Candles, made by rolling, colouring permitted, matching in all respects. One to be lit by the Judge. No flammable decoration other than beeswax permitted. First: £6; Second: £5; Third: £4.

MEAD (£1 entry) Rule 8 applies

234.	One Bottle. First: £6; Second: £5; Third: £4.
------	--

GIFT HONEY (no entry fee) (Rules 5 and 20 apply)

235.	One Jar Light or Medium. First: £6; Second: £5; Third: £4.
236.	One Jar Dark (free from Ling Heather). First: £6; Second: £5; Third: £4.
237.	One Jar Naturally Crystallised (not stirred). First: £6; Second: £5; Third: £4.

Sussex Beekeepers' Associations

Open only to Members of the Sussex Beekeepers' Association
and to Members of the West Sussex Beekeepers' Association

HONEY (£1 entry) Rule 5 applies

241.	Two Jars Light. First: £5; Second: £3; Third: £2.
242.	Two Jars Medium. First: £5; Second: £3; Third: £2.
243.	Two Jars Dark. First: £5; Second: £3; Third: £2.
244.	Two Jars Naturally Crystallised (not stirred). First: £5; Second: £3; Third: £2.
245.	Two Jars Soft Set. First: £5; Second: £3; Third: £2.
246.	▶ Two Matching Containers of Cut Comb. Gross weight 200g-340g. (Rule 6 applies.) First: £5; Second: £3; Third: £2.
247.	One Frame of Honey of any size, suitable for extracting . (Rule 6 applies.) First: £5; Second: £3; Third: £2.

GIFT HONEY (no entry fee) (Rules 5 and 20 apply)

248.	One Jar Clear, any colour. First: £5; Second: £3; Third: £2.
------	---

BEESWAX (£1 entry) Rule 7 applies

249.	One plain moulded piece at least 25mm (1 in) thick, and weighing not less than 454g (1lb). First: £5; Second: £3; Third: £2.
250.	▶ Six matching 27-29g (1oz) blocks. First: £5; Second: £3; Third: £2.

Only classes 241 to 250 inclusive are eligible for the points in the Sussex Cups.

MEAD OR METHEGLIN (£1 entry) Rule 8 applies

251.	One Bottle. First: PJ Cup and £5; Second: £3; Third: £2
------	--

NOVICES (no entry fee)

Open to any Member of either Association who has never won a first prize for Honey at the National Honey Show. Rule 5 applies.

252.	Two Jars Liquid Honey any Colour or Naturally Crystallised. First: Berry Cup and £5; Second: £3; Third: £2.
------	---

Essex Beekeepers' Association

Open only to Members of the Essex Beekeepers' Association
The Dodd Cup is awarded the member attaining most points in classes 261-272

HONEY (£1 entry) Rule 5 applies

261.	One Shallow Frame of Honey , suitable for extracting. (Rule 6 applies.) First: £6; Second: £4; Third: £2.
262.	Two Jars Light. First: £6; Second: £4; Third: £2.
263.	Two Jars Medium. First: £6; Second: £4; Third: £2.
264.	Two Jars Dark. First: £6; Second: £4; Third: £2.
265.	Three Jars of different types of Honey , any combination from Light, Medium, Dark, Soft Set or Naturally Crystallised. First: The Walter Gee Trophy and £6; Second: £4; Third: £2.
266.	Two Jars Naturally Crystallised or Soft Set. First: Tremearne Cup and £6; Second: £4; Third: £2.
267.	▶ Two Jars Chunk Honey. (Should contain approximately 50% cut comb) First: £6; Second: £4; Third: £2.
268.	▶ One Container of Cut Comb, (free from Ling Heather). Gross weight 200g-340g. (Rule 6 applies.) First: £6; Second: £4; Third: £2.

GIFT HONEY (no entry fee) (Rules 5 and 20 apply)

269.	One Jar Liquid, any colour. First: £6; Second: £4; Third: £2.
------	--

BEESWAX (£1 entry). Rule 7 applies

270.	One piece not less than 454g (1lb) weight and 25mm (1in) thick. First: £6; Second: £4; Third: £2.
271.	Three Matching Beeswax Candles made by moulding , one to be lit by judge. First: £6; Second: £4; Third: £2.
272.	Three Matching Beeswax Candles. All to be made by any method other than moulding and one to be lit by judge. First: £6; Second: £4; Third: £2.

MEAD (£1 entry). Rule 8 applies

273.	Dry, one Bottle. First: £6; Second: £4; Third: £2.
274.	Sweet, one Bottle. First: £6; Second: £4; Third: £2.

Federation of Middlesex Beekeepers' Associations

Open only to Members of the Federation of Middlesex Beekeepers' Associations

The Robert Lee Cup is awarded the the member attaining most points in Classes 281-294

The Carter Cup is awarded the the member awarded the Best Honey in Classes 281-285 and 288

HONEY (£1 entry) Rule 5 applies

281.	Two Jars Light. First: £6; Second: £4; Third: £2.
282.	Two Jars Medium. First: £6; Second: £4; Third: £2.
283.	Two Jars Dark. First: £6; Second: £4; Third: £2.
284.	Two Jars Naturally Crystallised (not stirred). First: £6; Second: £4; Third: £2.
285.	▶ Two Jars Chunk Honey. (Should contain approximately 50% cut comb). First: £6; Second: £4; Third: £2.
286.	One Frame of Honey Suitable for extracting. (Rule 6 Applies.) First: £6; Second: £4; Third: £2.
287.	▶ One container of Cut Comb. Gross weight 200g-340g. First: £6; Second: £4; Third: £2. (See Rule 6.)

GIFT HONEY (no entry fee) (Rules 5 and 20 apply)

288.	One Jar any colour liquid or soft set. First: C.H. Knifton Challenge Cup and £6; Second: £4; Third: £2.
------	---

BEESWAX (£1 entry) Rule 7 applies

289.	One piece between 200-255g (7oz-9oz), not less than 13mm (½in) thick. First: Frazer Cup and £6; Second; £4, Third; £2
290.	▶ Three Matching 27-29g (1oz) Blocks. First: £6; Second: £4; Third: £2.

MEAD (£1 entry) Rule 8 applies.

291.	Dry, one Bottle. First: £6; Second: £4; Third: £2.
292.	Sweet, one Bottle. First: £6; Second: £4; Third: £2.

CANDLES (£1 entry) Rule 7 applies

293.	▶ Three Matching Dipped Candles. One to be lit by judge. First: £6; Second: £4; Third: £2.
294.	▶ Three Matching Moulded Candles. One to be lit by judge. First: The EJ Woodman Challenge Cup and £6; Second: £4; Third: £2.

Bucks County Beekeepers' Association

Open only to Members of Bucks County BKA

The Lord Cadman Cup is awarded to the member attaining most points in Classes 301-318

HONEY (£1 entry) Rule 5 applies

301.	Two Jars Light. First: The Lawrie Webb Shield and £6; Second: £4; Third: £2.
302.	Two Jars Medium. First: £6; Second: £4; Third: £2.
303.	Two Jars Dark. First: £6; Second: £4; Third: £2.
304.	Two Jars Naturally Crystallised (not stirred). First: £6; Second: £4; Third: £2.
305.	Two Jars Soft Set. First: £6; Second: £4; Third: £2.
306.	One Jar of liquid honey judged solely on taste, aroma and viscosity to be shown in a transparent container. (Rule 5 does not apply) First: £6; Second: £4; Third: £2.
307.	One Frame Honey any size, suitable for extraction or suitable for cut comb. (Unwired for the latter) First: £6; Second: £4; Third: £2.

MEAD (£1 entry) Rule 8 applies

308.	Dry, one Bottle. First: £6; Second: £4; Third: £2.
309.	Sweet, one Bottle. First: £6; Second: £4; Third: £2.
310.	One Bottle of Melomel, Metheglin, Cyser or Pyment. First: £6; Second: £4; Third: £2.

BEESWAX (£1 entry) Rule 7 applies

311.	One Piece between 200-255g (7oz- 9oz). First: £6; Second: £4; Third: £2.
312.	Two Matching Moulded or Dipped Beeswax Candles. One to be lit by the Judge. First: £6; Second: £4; Third: £2.
313.	Two Decorative Beeswax Candles, made by rolling, colouring permitted, matching in all respects. One to be lit by the Judge. No flammable decoration other than beeswax permitted. First: £6; Second: £4; Third: £2.
314.	Beeswax Wrap, two matching pieces. Each 30cm square. Made from Beeswax only, no additional oils/resins permitted. One piece of wrap will be used to wrap a food item which will be supplied by the Show on Wednesday. Rule 3b applies. First: £6; Second: £4; Third: £2.

MICROSCOPY (£1 entry) Rule 3a applies. See guidance notes page 32

315.	One Microscope slide prepared by the Exhibitor, 3" x 1", subject: pollen. First: £6; Second: £4; Third: £2.
316.	One Microscope slide prepared by the Exhibitor, 3" x 1", subject: honey bee anatomy. First: £6; Second: £4; Third: £2.

CONFECTIONERY (Gift Class, no entry fee). Rule 9 Applies

317.	Lemon Honey Cake. Exhibits must be made to this recipe. Ingredients: 170g, butter, 60g caster sugar, 140g honey, 3 large eggs, 225g self raising flour, Grated rind of a lemon, Juice of half a lemon. Preparation; Cream butter, sugar and honey. Mix in lemon rind, beat eggs lightly and gradually add to the mixture. Stir in lemon juice. Fold in sieved flour, transfer to a greased and base lined 900g loaf tin. Bake for 1hr-1hr 10mins at 160°C/325°F/gas mark 3. First: £6; Second: £4; Third: £2.
-------------	---

PHOTOGRAPHY (£1 entry) Rules 1, 3a, 15 and 27 apply. See guidance on page 31 regarding the mounting of photographs.

318.	► One Photograph on a subject related to bees and beekeeping, Colour or Black and White. First: £6; Second: £4; Third: £2.
-------------	---

London Beekeepers' Association

Although the prize money is sponsored by LBKA these classes are open to any beekeeper who has colonies within the area enclosed by the M25.

HONEY (£1 entry limited to 1 entry per class per beekeeper) Rule 13 applies.

321.	Two Jars Urban Honey. Judged solely on taste and aroma. Rule 5a does not apply. First: £6; Second: £4; Third: £2.
322.	► Two Matching Jars of Jam, Marmalade or other Preserve with Honey as the only sweetening ingredient. 340g or 454g plain honey/jam jar with screw or twist lids. Ingredients and method to be submitted. Rule 9d applies. First: £6; Second: £4; Third: £2.
323.	One container of Liquid Honey judged partly on taste and aroma but mainly on the novelty of the container. To be shown in an interesting or unusual transparent container. (Rule 5a does not apply) First: £6; Second: £4; Third: £2.

The Federation Cup

Open to Huntingdonshire, Buckinghamshire, Hertfordshire, Bedfordshire,
Cambridgeshire and Peterborough & District.

Entry Fee £10 per County, for guidance notes see the Federation Cup rules available from any of the Counties listed. Rules 4, 5, 6, 7 and 8 Apply

	Each County can make one combined entry consisting of Seven Classes comprising:-
340.	Two Jars Light Honey
341.	Two Jars Naturally Crystallised or Soft Set Honey
342.	▶ Two Jars Chunk Honey. (Should contain approximately 50% cut comb).
343.	One Frame of Honey, suitable for extraction
344.	▶ Two Matching Beeswax Candles of any type, all to be made by the same method. One to be lit by the judge.
345.	▶ Three Matching 27-29g (1oz) Blocks
346.	One Bottle of Mead, Metheglin or Melomel Points will be awarded to first, second and third prizes and the county with most points will be awarded the Federation Cup.

Suffolk Beekeepers' Association

Only Open to Members of Suffolk Beekeepers' Association

HONEY (£1 entry) Rule 5 applies

351.	Two Jars Light. First: £10; Second: £5
352.	Two Jars Medium. First: £10; Second: £5
353.	Two Jars Dark. First: £10; Second: £5.
354.	Two Jars Naturally Crystallised (not stirred). First: £10; Second: £5.
355.	Two Jars Soft Set. First: £10; Second: £5.

Berkshire Beekeepers' Association

Open to any of the members of the independent Berkshire Associations
The Berkshire Shield will be awarded to the member attaining most points in Classes 361-364

HONEY (£1 entry) Rule 5 applies

361.	Two Matching Jars Light or Medium First: £6; Second: £4; Third: £2.
362.	Two Jars Naturally Crystallised or Soft Set. First: £6; Second: £4; Third: £2.
363.	▶ One Container of Cut Comb. Gross weight 200g-340g. (Rule 6 applies) First: £6; Second: £4; Third: £2.

BEESWAX (£1 entry) Rule 7 applies

364.	▶ Three Matching 27-29g (1oz) Blocks. (Rule 7 applies) First: £6; Second: £4; Third: £2.
------	---



THORNE

HELPING BEEKEEPERS KEEP BEES FOR OVER 100 YEARS

QUALITY HIVES, BEES, FRAMES, FOUNDATION, HARDWARE & CLOTHING, HONEY PROCESSING, LABELS, PACKAGING, QUEEN REARING, HEALTH & FEEDING, BOOKS, GIFTS, EDUCATION, CANDLEMAKING, AND MORE!



HANDMADE IN THE UK

As well as our quality wooden hive parts, we also expertly craft many other products in our factory in Lincolnshire, including smokers and extractors.

We would like to say a huge congratulations to **THE NATIONAL HONEY SHOW**

on their Centenary Celebration

COME & FIND US IN THE MAIN HALL

We will have a full range of equipment for you to browse.

As usual, you can order for collection from the show, including our sale items. Make sure you render down your beeswax to bring to swap for fresh foundation.

Make sure you order now, to collect from the show, to avoid missing out!

SHOP ONLINE, OVER THE PHONE, OR IN STORE

LINCOLNSHIRE

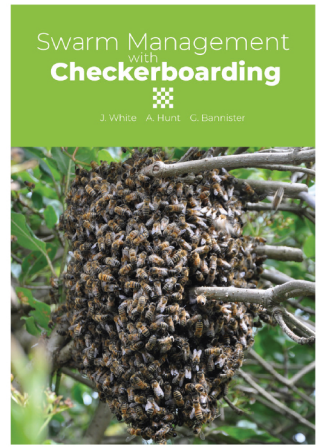
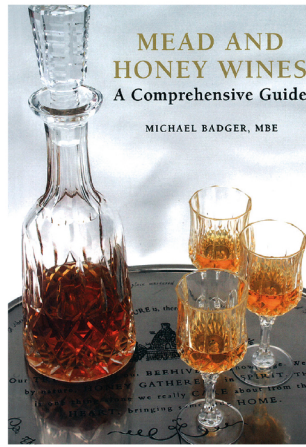
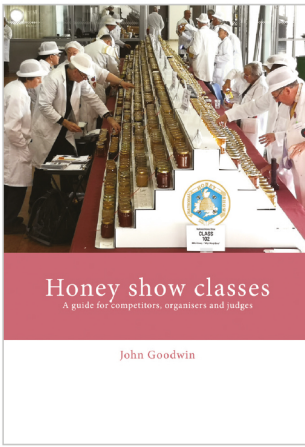
BEEHIVE BUSINESS PARK, RAND, NR WRAGBY, MARKET RASEN, LN8 5NJ sales@thorne.co.uk 01673 858555

STOCKBRIDGE
CHILBOLTON DOWN FARM,
HAMPSHIRE, SO20 6BU
stockbridge@thorne.co.uk
01264 810916

SCOTLAND
NEWBURGH IND. ESTATE,
NEWBURGH, FIFE, KY14 6HA
scotland@thorne.co.uk
01357 842596

WINDSOR
OAKLEY GREEN FARM,
WINDSOR, SL4 4PZ
windsor@thorne.co.uk
01753 830256

DEVON
QUINCE HONEY FARM,
SOUTH MOLTON, EX36 3RD
devon@thorne.co.uk
01769 573086



ALL BEEKEEPING TITLES
 Mailed globally and available from northernbeebooks.co.uk
 Join the newsletter to receive information on new publications in all fields of beekeeping at northernbeebooks.co.uk

